

**WORK  
FROM  
ANY  
WHERE**



**QD568**

Onesize

Pitch Black 72 Hour  
Weekender



**QD565**

Onesize

Pitch Black 24 Hour  
Backpack



**QD560**

Onesize

Pitch Black 12-Hour  
Daypack



**QD925**

Onesize

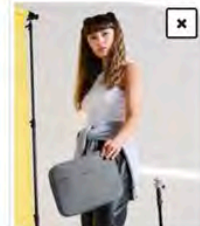
Project Charge Security  
Backpack



**QD995**

Onesize

Q-Tech Charge Roll-Top  
Backpack



**BG065**

Onesize

Essential Tech  
Organiser



**QD568** Onesize  
Pitch Black 72 Hour Weekender

Alongside the external access padded laptop compartment and quick access end pockets, the pitch black 72 hour weekender has an innovative strap system that quickly converts the bag from backpack to shoulder bag. Built for purpose, the travel bag is ready for global business trips, everyday commutes and long haul journeys.

**SPECIFICATION**  
Water-repellent, abrasion resistant fabric. Minimalist design with adaptable functionality. Laptop compatible up to 15.6". External access padded laptop compartment. Spacious main compartment with easy access opening. Zippered side pocket for bottle/ umbrella. Quick access end pockets. Full HD Polyester lining. Internal elastic bottle holder. Innovative strap system quickly converts from backpack to shoulder bag. Breathable padded mesh back panel. High density seatbelt webbing.

Fabric 1000D Twist weave polyester  
Weight 1120g  
Bag Capacity 28 Litres  
Dimensions 31 x 55 x 25cm  
Washing Instructions Sponge clean only

**QD568**  
Pitch black 72 hour weekender  
FROM £55.95



**QD565** Onesize  
Pitch Black 24 Hour Backpack

From the next business meeting to your annual company trip, the pitch black 24 hour backpack has a minimalist design with adaptable functionality. Featuring a laptop compatible compartment and water-repellent, abrasion resistant fabric, the backpack is wet weather ready.

**SPECIFICATION**  
Water-repellent, abrasion resistant fabric. Minimalist design with adaptable functionality. Laptop compatible up to 15.6". External access secure padded laptop compartment. Zippered front compartments for flexible organisation. Full HD Polyester lining. Internal elastic bottle holder. Expandable capacity from 20-25 litres. Breathable padded mesh back panel. High density seatbelt webbing.

Fabric 1000D Twist weave polyester  
Weight 905g  
Bag Capacity 20 Litres  
Dimensions 33 x 50 x 21cm  
Washing Instructions Sponge clean only

**QD565**  
Pitch black 24 hour backpack  
FROM £45.95



**QD560** Onesize  
Pitch Black 12-Hour Daypack

Offering 14 litres of storage, the pitch black 12-hour daypack is water-repellent, abrasion resistant fabric and has a minimalist design. The breathable padded mesh back panel offers support for the daily commute or business trip.

**SPECIFICATION**  
Water-repellent, abrasion resistant fabric. Minimalist design with adaptable functionality. Laptop compatible up to 13". External access secure padded laptop compartment. Front pocket organiser section. Full HD Polyester lining. Internal elastic bottle holder. Expandable capacity from 14 -18 litres. Breathable padded mesh back panel. High density seatbelt webbing

Fabric 1000D Twist weave polyester  
Weight 805g  
Bag Capacity 14 Litres  
Dimensions 33 x 48 x 19cm  
Washing Instructions Sponge clean only

**QD560**  
Pitch black 12-hour daypack  
FROM £39.95



**QD925** Onesize  
Project Charge Security Backpack

The Project charge security backpack features a minimalist design and concealed security zip around the top of the bag to ensure valuables remain locked away in transit. This lightweight backpack also benefits from an integrated USB charging port and robust slash-proof construction.

**SPECIFICATION**  
Slash-proof construction. Hidden access main compartment. Minimalist styling. Lightweight yet durable. Padded internal iPad / Tablet compartment. Padded laptop compartment, compatible up to 15.6". Discrete zippered back panel pocket. Multiple internal pockets. Power bank pocket. Integrated USB charging port. Elasticated cable organiser. Key hook. Wheelie bag strap. Ergonomic padded back panel. Padded adjustable shoulder straps.

Fabric Jacquard nylon/ PU coated polyester combination  
Weight 1120g  
Bag Capacity 15 Litres  
Dimensions 30.5 x 46 x 17cm  
Washing Instructions Sponge clean only.

**QD925**  
Project charge security backpack  
FROM £59.95



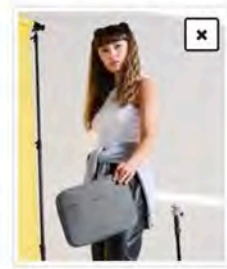
**QD995** Onesize  
Q-Tech Charge Roll-Top Backpack

Blur the lines between work and play with the Q-tech charge roll-top backpack which benefits from a handy integrated USB charging port. This introduction to techwear offers relaxed styling with all the practical features of a corporate backpack.

**SPECIFICATION**  
Laptop compatible up to 15.6". External access padded laptop compartment. Secure roll-top and clip closure system. Discrete zippered back panel pocket. Front pocket organiser section. Internal slip pocket. Multiple internal pockets. Power bank pocket. Integrated USB charging port. Zippered front pocket. Zippered side bottle pocket. Ergonomic padded back panel. Padded adjustable shoulder straps.

Fabric 650D Polyester  
Weight 780g  
Bag Capacity 22 Litres  
Dimensions 31 x 45 x 17cm  
Washing Instructions Sponge clean only.

**QD995**  
Q-Tech charge roll-top backpack  
FROM £35.95



**BG065** Onesize  
Essential Tech Organiser

Contemporary slimline design for your small laptop or tablet. Keep your files and folders safe and tidy. Tablet compatible up to 11".

**SPECIFICATION**  
Contemporary slimline design. Tablet compatible up to 11". Padded internal iPad/ Tablet compartment. Padded zippered main compartment. Front slip pocket. Front pocket designed for easy decoration. Can be decorated front and rear. Elasticated cable organiser. Soft-touch lining. Zippered internal mesh pocket. Multiple internal pockets.

Fabric 600D Polyester  
Weight 24g  
Size One size  
Bag Capacity 1.25 Litres  
Dimensions 30 x 22 x 2cm  
Washing Instructions Sponge clean only

**BG065**  
Essential tech organiser  
FROM £11.95

ALL OUR BAGS CAN BE PERSONALISED WITH YOUR COMPANY LOGO



www.flavell.com  
studios@flavell.com 01324 489900 & 01324 578924

